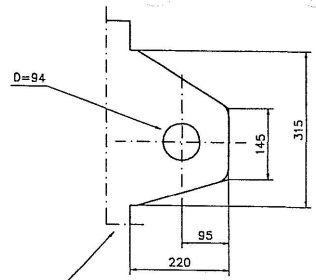
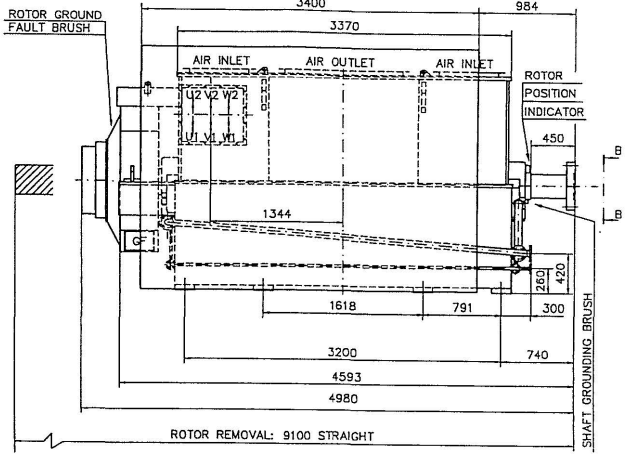
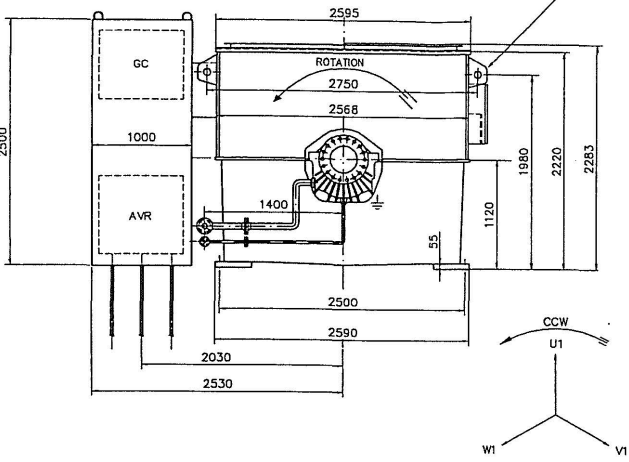
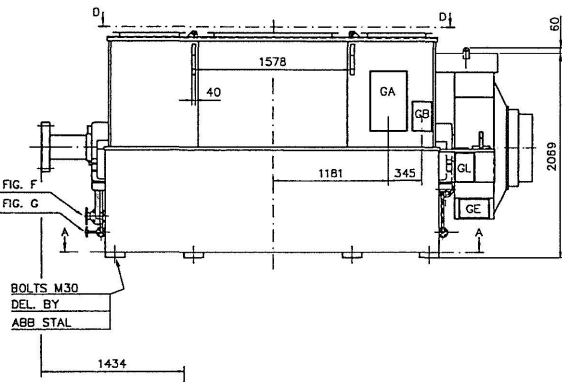


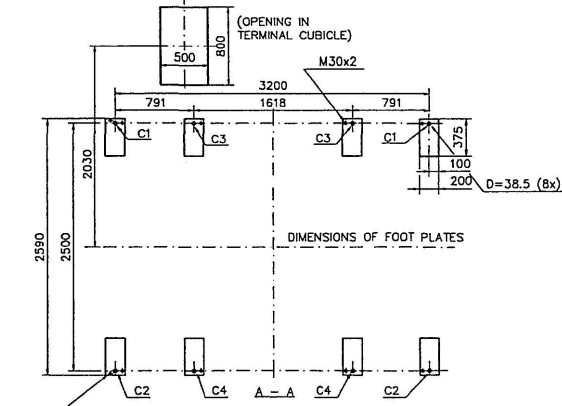
POS.	STATIC LOADS (KN)		TOTAL STATIC LOAD AT OPERATION	DYNAMIC LOADS (KN)		TIGHT TORQUE HOLDING DOWN BOLTS
	WEIGHT	AT RATED TORQUE		SHORT CIRCUIT		
C1	53	13.6	66.6	-	1500 Nm	
C2	53	-13.6	39.4	-	1500 Nm	
C3	53	13.6	66.6	±308	1500 Nm	
C4	53	-13.6	39.4	±308	1500 Nm	



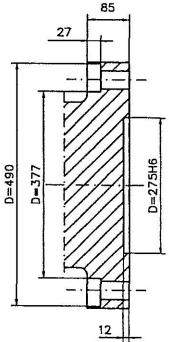
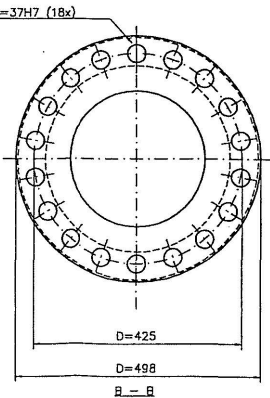
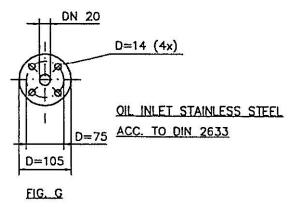
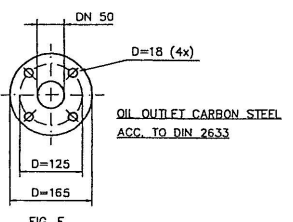
MAX ALLOWED AIR PRESSURE
DROP IN DUCTS = 400 Pa
AIR FLOW 11 m³/s AT 40°C



THIS MACHINE IS NOT
DESIGNED TO TAKE
ANY AXIAL FORCES.
PERMISSIBLE AXIAL TRAVEL ±15



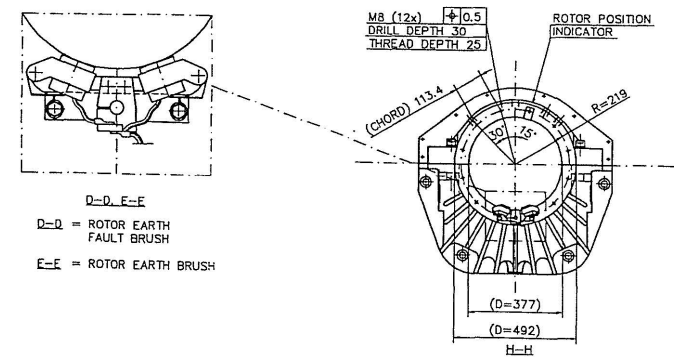
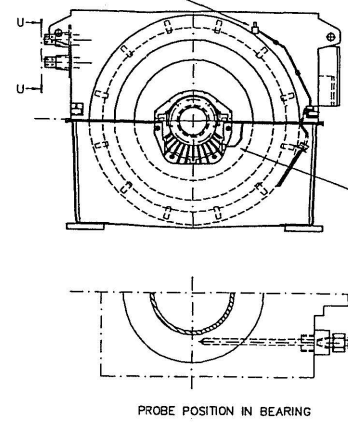
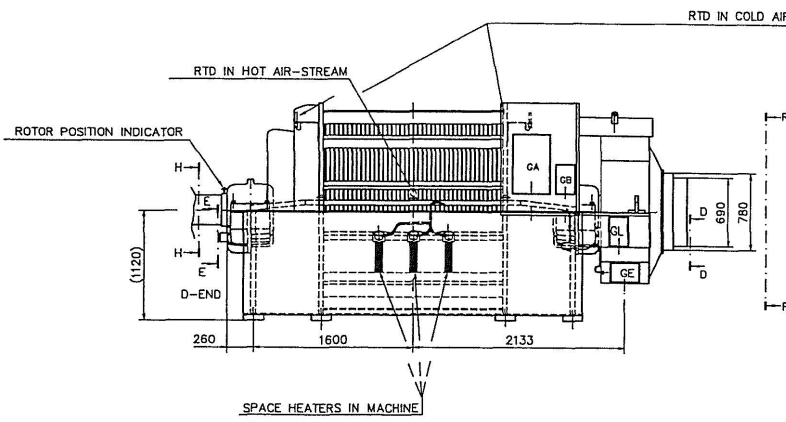
RESPONSIBILITY FOR THE FOUNDATION RESTS UPON THE CUSTOMER WHO SHOULD WHEN SELECTING DIMENSIONS TAKE LOCAL CONDITIONS INTO ACCOUNT. THIS ALSO APPLIES TO THE ARRANGEMENT OF DUCTS AND ACCESS TO THE PIT. FOUNDATION ACC. TO 4261 272E.



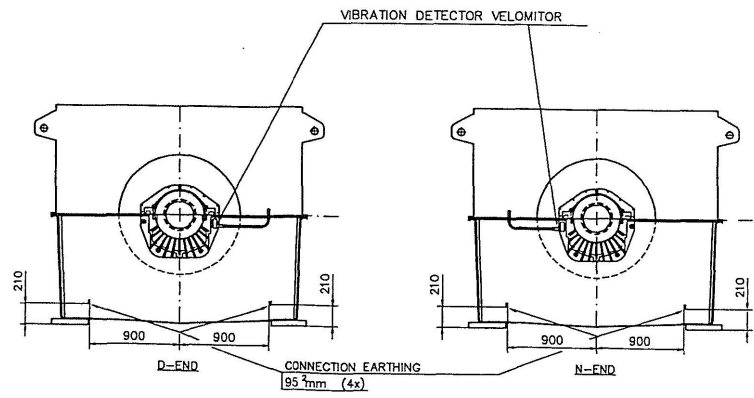
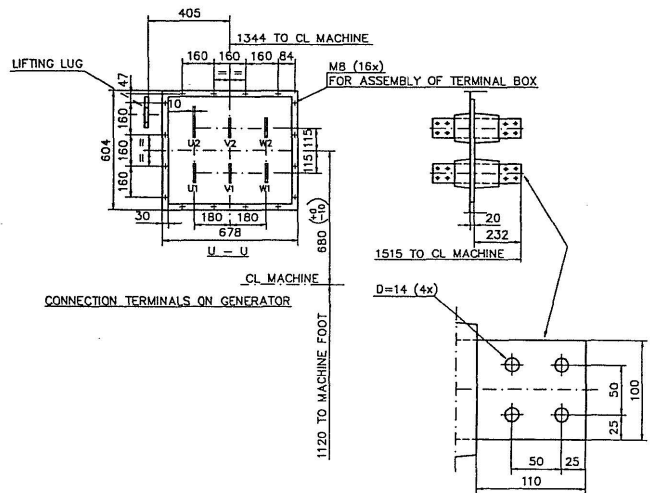
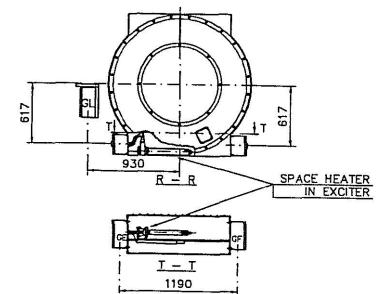
STATOR	20550 KG
ROTOR	16450 KG
TOTAL	43000 KG
TERMINAL BOX	1900 KG
OIL REQ. TOTAL	36.2 l/min
REQ. OIL PRESSURE	15.4 kPa
OIL VISC.	46 mm ² /s AT 40°C

Based on	ISS	26250 kVA, 11 kV, 1500 RPM
Prepared	98-12-14 M.Kvartsen	Group Drawing
Approved	98-12-15 HOLGER PERSSON	OUTLINE SYNCHR. GENERATOR
ABB Stal AB	ABB Industrial Products	Rev. ind. 1 Linn 61 Sheet 1 Scale 2

BOX	CONNECTION BOX FOR
CA	RTD, WATER LEAKAGE DETECTOR, VIBRATION DETECTOR
CB	HEATERS IN MAIN MACHINE AND EXCITER
CC	CT'S, PT'S AND HEATER IN TERM. BOX
CE	HEATER IN EXCITER
CF	PMG, EXCITATION
CL	ROTOR EARTH FAULT



D-D, E-E
 D-D = ROTOR EARTH FAULT BRUSH
 E-E = ROTOR EARTH BRUSH



Based on	ISS	Drum, voltage, speed	26230 kVA, 11 kV, 1500 RPM	Size	
Prepared	98-12-14 M.Kvartsen	Group Drawing		Project	
Approved	98-12-15 HOLGER PERSSON	OUTLINE SYNCHR. GENERATOR			
ABB Stal AB		Rev. dept. MAS	Rev. list	Scale	BD
				Sheet	2
				Legal	

ABB Industrial Products